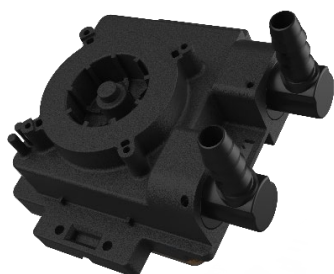




Building upon the success of the MasterLiquid series, Cooler Master presents the newly redesigned MasterLiquid 360 Core II White. Features such as a refined G9R dual chamber pump for silent performance and updated CPU compatibility for total build flexibility make the Core II a next level liquid cooler. With an infinity mirror design on the pump cover, overhauled and enhanced fans, and optimized tubes for easy installation, the Core II is the epitome of powerfully elegant design. Take the cooling power of your setup into the modern era with the MasterLiquid 360 Core II White

MASTERLIQUID 240 CORE II WHITE



DUAL CHAMBER PUMP

Upgraded design resulting in a compact cooler with superior performance



UPDATED CPU COMPATIBILITY

The Core II is compatible with all of the latest AMD and Intel CPUs



INNOVATIVE DESIGN

An infinity mirror pump cover gives the pump a stellar aesthetics



REVAMPED FANS

The brand-new fan blades and revamped aesthetics deliver outstanding performance and a fresh look



EASY INSTALLATION

Now includes a quick-mount kit compatible with all mainstream processor sockets, along with pre-installed fans



OPTIMUM TUBING LENGTH

400 mm long tubing enables effortless mounting of the cooler in any orientation

DUAL CHAMBER PUMP - Upgraded design resulting in a compact cooler with superior performance

UPDATED CPU COMPATIBILITY - The Core II is compatible with all the latest AMD and Intel CPU's

INNOVATIVE DESIGN - An infinity mirror pump cover gives the pump a stellar aesthetics

REVAMPED FANS - The brand-new fan blades and revamped aesthetics result in outstanding performance and a fresh look

EASY INSTALLATION - Now includes a quick-mount kit compatible with all mainstream processor sockets, along with pre-installed fans

OPTIMUM TUBING LENGTH - 400 mm long tubing enables effortless mounting of the cooler in any orientation

SPECIFICATIONS

Product Name		MasterLiquid 240 Core II White
Product Number		MLW-D24M-A18PA-RW
Exterior Color		White
CPU Socket		Intel® LGA 1851 / 1700 / 1200 / 1156 / 1155 / 1151 / 1150 Socket
		AMD® AM5 / AM4 Socket
Radiator	Material	Aluminum
	Dimensions (L x W x H)	277 x 119.2 x 27.2 mm (10.9 x 4.7 x 1.1 inch)
Tube	Length	400 mm (15.75 inch)
Pump	Dimensions (L x W x H)	83 x 76.2 x 52.3 mm (3.3 x 3 x 2.1 inch)
	Profiles	Addressable RGB
	Speed	3100 ± 300 RPM
	MTTF	> 50,000 hours
	Noise Level (Max)	25 dB(A)
	Rated Voltage	12 VDC
	Power Consumption	3.6 W
	Connector	3-Pin ARGB + 4-Pin PWM

FAN	Dimensions (L x H x W)	120 x 120 x 25 mm (4.7 x 4.7 x 1 inch)
	Profiles	Addressable RGB
	Quantity	2 PCS
	Speed	650 ~ 1750 RPM ±10%
	Air Flow (Max)	120 m³/h (70.5 CFM)
	Air Pressure (Max)	2 mmH₂O
	MTTF	> 160,000 hours
	Noise Level (Max)	30 dB(A)
	Bearing	Sleeve Bearings
	Connector	7-Pin PWM + ARGB
	Rated Voltage	12 VDC
	Rated Current	0.23 A
	Safety Current	0.45 A
	Power Consumption	2.76 W
Warranty		5 years

PACKING INFORMATION

EAN Code	4719512154847
UPC Code	884102127168
Net weight	1.45
Gross weight	2.15
Package dimension (L x W x H)	372 x 212 x 143 mm
Carton dimension (L x W x H)	596 x 392 x 24 mm
Unit / Carton	4

Cont.	W/ Pallet	Carton / Pallet	W/O Pallet
20'	1408	32	N/A
40'	3200	32	N/A
40 HQ	3600	36	N/A